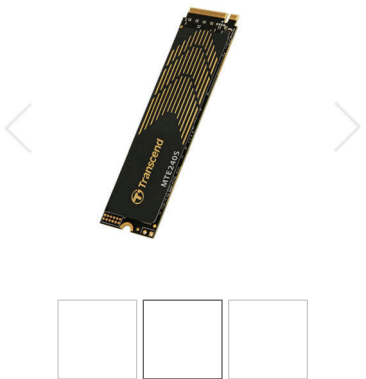


PCIe M.2 SSDs



PCIe SSD 240S

Transcend's PCIe[®] SSD 240S aims at high-end applications, such as digital audio/video production, gaming, and enterprise use, which require constant processing of heavy workloads with no system lags or slowdowns of any kind. Utilizing the PCI Express[®] Gen4 x4 interface supported by the latest NVMe[®] standard, 3D NAND flash memory, a 4-channel controller, and a DRAM cache, the PCIe SSD 240S offers superior transfer speeds that easily beat the competition.

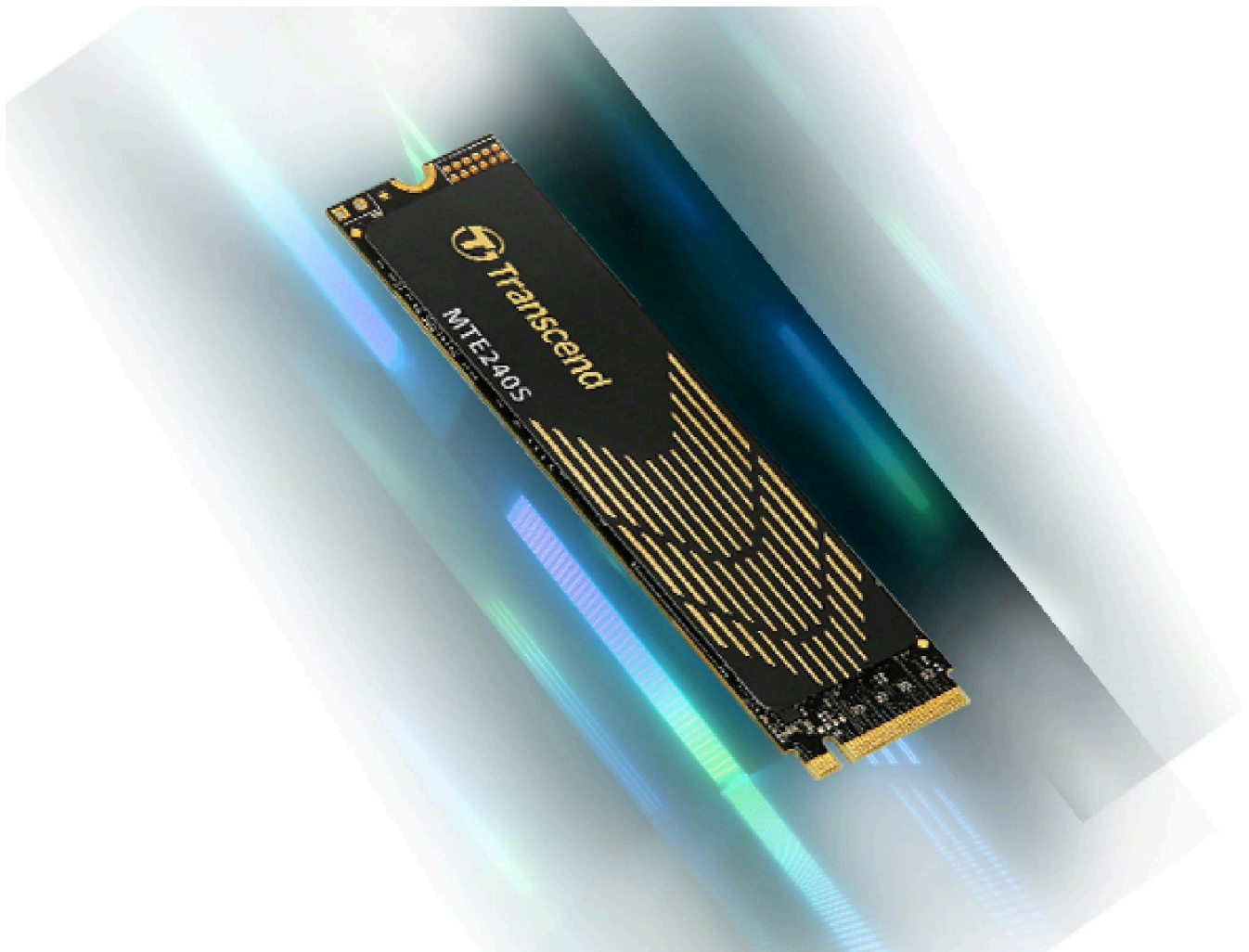
Transcend NVMe PCIe Gen4 x4 SSD 240S - Where Speed Meets Durability



Supreme transfer speeds

Transcend's PCIe SSD 240S follows the NVMe 1.4 standard and utilizes the PCIe Gen4 x4 interface, meaning four lanes are used for transmitting and receiving data simultaneously. Its 4-channel controller supports ultra-high data throughput, resulting in the compelling performance of up to 3,800MB/s read and 3,200MB/s write.

Note: Performance is based on CrystalDiskMark v6.0.2.



Understanding the NVMe PCIe interface

NVMe (or NVM Express) is a host controller interface standard designed to address the needs of enterprise and client applications that utilize PCI Express-based solid-state storage. The NVMe PCIe interface consists of one or more lanes connected serially, which can best support data transmission between a host computer and an SSD.

*PCIe and PCI Express wordmarks are registered trademarks of PCI-SIG.

*NVM Express and NVMe wordmarks are registered or unregistered service marks of the NVM Express organization in the United States and other countries.



Next generation storage: PCIe 4.0 SSD

PCIe SSD 240S features the new PCIe 4.0 specification. It supports a bandwidth of 16 GT/s per lane as opposed to 8 GT/s per lane for PCIe 3.0. Downwards compatible with PCIe 3.0, PCIe 4.0 unleashes a higher processing speed for your computer and guarantees lower system latency.



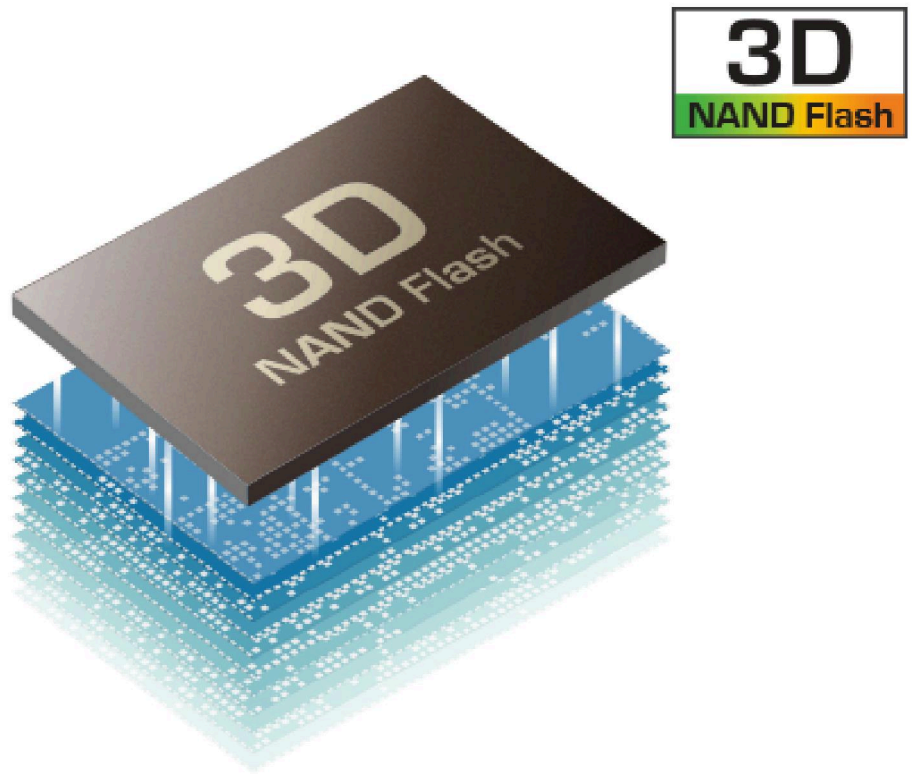
Stay cool with graphene heatsink

PCIe SSD 240S is integrated with an ultra-thin graphene heatsink to effectively improve the heat dissipation of the compact-sized SSD. The high conductivity of graphene quickly cools the system down, ensuring stable device performance.



3D expansion to break through limits

Unlike planar NAND memory, 3D NAND flash features memory cells stacked vertically in multiple layers. 3D NAND overcomes the density limitations of 2D planar NAND, and delivers a higher level of performance and endurance.



Better endurance, higher reliability

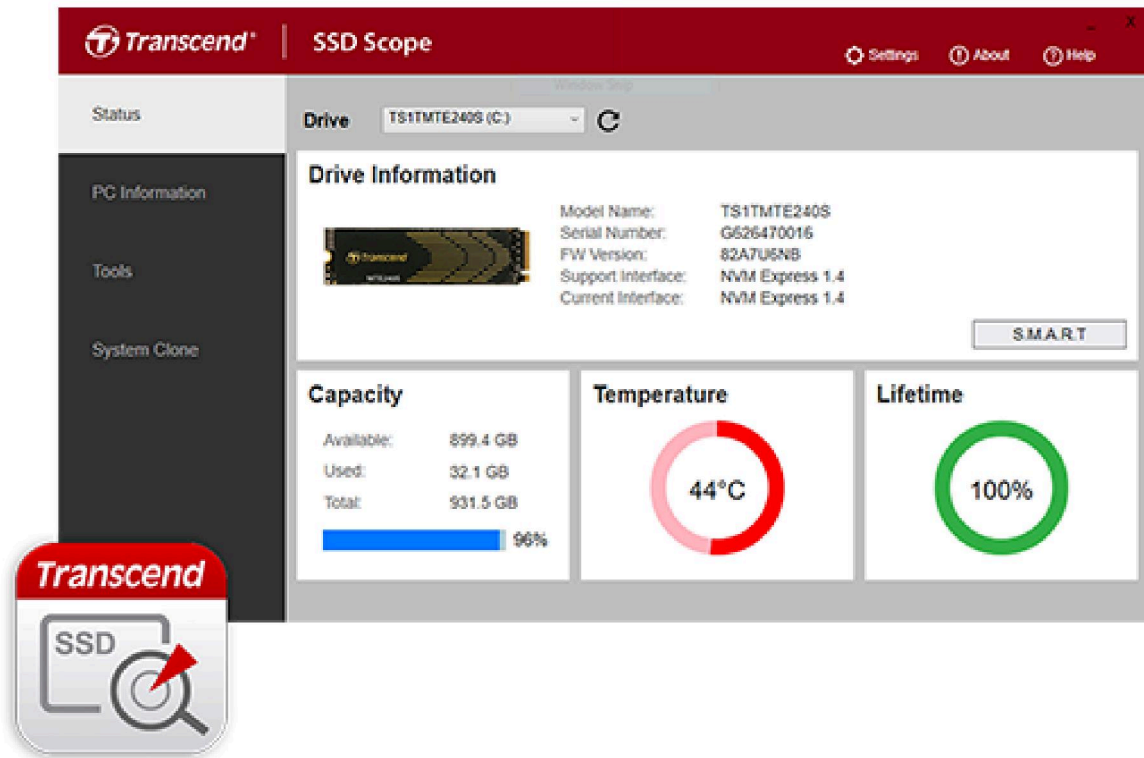
Transcend's PCIe SSD 240S is engineered with LDPC (Low-Density Parity Check) coding, a powerful ECC algorithm, to keep data secure. Engineered with a dynamic thermal throttling mechanism, the temperature is precisely monitored and controlled for the PCIe SSD 240S, delivering superior endurance and stability for high-end applications.



SSD Scope software

Transcend SSD Scope is advanced, user-friendly software that makes it easy to ensure your Transcend SSD remains healthy, and continues to run fast and error-free by determining the condition and optimizing the performance of your drive.

[Learn more \(/support/software/ssd-scope\)](https://support.transcend-info.com/software/ssd-scope)



Guaranteed quality

To ensure the utmost level of quality, Transcend SSDs undergo rigorous testing at all stages of production, including tests for vibration, temperature and humidity, speed, and functionality.

Specifications



Appearance

Dimensions	Double-sided 80 mm x 22 mm x 3.77 mm (3.15" x 0.87" x 0.15")
Weight	10 g (0.35 oz)
Type	M.2 2280

Interface

Bus Interface	NVMe PCIe Gen4 x4
---------------	-------------------

Storage

Flash Type	3D NAND flash
Capacity	500 GB / 1 TB

Operating Environment

Operating Temperature	0°C (32°F) ~ 70°C (158°F)
Operating Voltage	3.3V±5%

Performance

Sequential Read/Write (CrystalDiskMark)	1 TB	Up to 3,800/3,200 MB/s
	500 GB	Up to 3,800/3,200 MB/s
4K Random Read/Write (IOMeter)	1 TB	Up to 370,000/560,000 IOPS
	500 GB	Up to 190,000/540,000 IOPS
Terabytes Written (TBW)	1 TB	1700 TBW
	500 GB	850 TBW
Mean Time Between Failures (MTBF)	2,000,000 hour(s)	
Drive Writes Per Day (DWPD)	0.95 (5 yrs)	
Note	<ul style="list-style-type: none">Speed may vary due to host hardware, software, usage, and storage capacity.The workload used to rate DWPD may be different from your actual workload, which may vary due to host hardware, software, usage, and storage capacity.Terabytes Written (TBW) expresses the endurance under the highest capacity.Some motherboards only provide PCIe x2 connections for the M.2 slot, creating a bottleneck on even the fastest drives.	

Warranty

Certificate	CE / UKCA / FCC / BSMI / KC / RCM
Warranty	Five-year Limited Warranty
Warranty Policy	<ul style="list-style-type: none">Please click here (/Warranty) for more information about the Transcend Warranty Policy.Warranty does not apply when SSD Scope's lifetime indicator displays 0% within the warranty coverage.Removal of heatsink may cause damage to the SSD not covered under Transcend's warranty policy.

System Requirement

Operating System	<ul style="list-style-type: none">Microsoft Windows 7 or laterLinux Kernel 2.6.31 or later
Note	Systems for use with the PCIe M.2 SSD must have an M.2 connector with only an M key. B-key connectors are not compatible. Improper insertion may lead to damage. Please click here (/Support/FAQ-1206) for more information.

Technology

S.M.A.R.T.	✓
Advanced Garbage Collection	✓
RAID Engine	✓
LDPC Coding	✓
DRAM Cache	✓

Awards



(<http://www.transcend-info.com/Goto/5831>)

Editor’s Choice

Root Nation
Ukraine



(<https://elchapuzasinformatico.com/2021/08/transcend-pcie-ssd-240s-review>)

Silver Award

El Chapuzas Informatico
Spain



(<http://www.transcend-info.com/Goto/5747>)

Editor’s Choice

PC Ekspert
Croatia

Order Information

500GB

TS500GMTE240S

1TB

TS1TMTE240S



Product Sheet

(https://CDN.transcend-info.com/products/images/modelpic/1175/Transcend-MTE240S_202304.pdf)



Support

(</support/product/internal-ssd/mte240s>)



Compatibility

(</support/compatibility/product/internal-ssd/mte240s>)

Consumer Products	Embedded Solutions	Support	About Us
Internal SSDs (/product/internal-ssd)	Embedded SSD Solutions (/Embedded/Product/ssd)	Product Support (/support/service)	Company Profile (/about/company-profile)
Portable SSDs (/product/portable-ssd)	Embedded Flash Solutions (/Embedded/Product/flash)	Software Download (/support/software)	Advantage (/about/advantage)
External Hard Drives (/product/external-hard-drive)	Embedded Memory Cards (/Embedded/Product/memory-cards)	Compatibility (/support/compatibility)	Awards (/about/awards)
Dashcams (/product/dashcam)	Embedded DRAM Modules (/Embedded/Product/modules)	Warranty Policy (/warranty)	Investor Relations (/about/investor-relations)
Body Cameras (/product/body-camera)	Technologies (/Embedded/Technologies)	Warranty Check (/support/verification)	Shareholder Services (/about/shareholder-services)
Memory Cards (/product/memory-card)	Applications (/Embedded/Applications)	Where to Buy (/support/buy)	Sustainable Development (/about/social_responsibility)
USB Flash Drives (/product/usb)	Software Solutions (/Embedded/Software)	Partner Center (/partnercenter/)	Press (/about/press)
DRAM Modules (/product/dram-module)	Resource Download (/embedded/download)		Green Initiatives (/about/green-initiatives)
Card Readers, DVD Writers & Accessories (/product/card-reader-accessory)			Contact Us (/support/contact)
Customized Solutions (/products/oem.aspx)			

Copyright© 2024 Transcend Information, Inc. All Rights Reserved. [Contact Us \(/support/contact\)](/support/contact) [Legal \(/legal/\)](/legal/)

You have already accepted cookies, but you may still revoke your consent at any time. Please see more details at [Cookie Statement \(/legal/cookies-statement\)](/legal/cookies-statement). [Change Settings](#)